

CERTIFICATE OF LOCATION OF GOVERNMENT CORNER

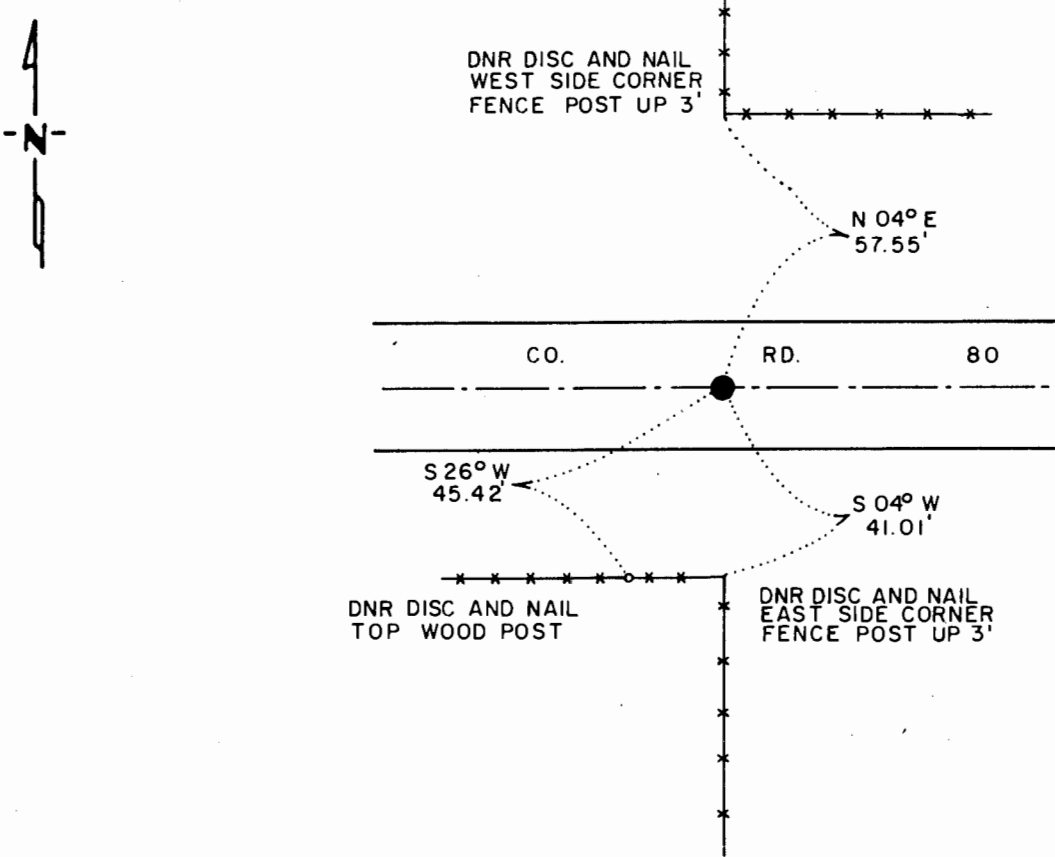
NORTH QUARTER Corner of Section 17, Township 108 N., Range 43 W., 5th P.M.

STATE OF MINNESOTA, County of MURRAY

At the corner location shown on the sketch:

- On 7-6-82 found a 6"x10"x12" CONCRETE CYLINDER, DOWN 1"
DATE
- left monument as found, lowered monument, removed monument (explain)
- On 7-6-82 placed a 1 1/4"x1 1/4"x4" PERFORATED STEEL TUBE WITH
DATE ALUMINUM CAP STAMPED "DNR SURVEY MARKER", DOWN 0.2'

SKETCH OF REFERENCE TIES



TIES TAKEN 8-5-86
BEARINGS OBSERVED WITH COMPASS

Statement of evidence relative to this corner location is on back of page.

J. A. G. 8-19-86
FILE G-202

I hereby certify that this document and the data contained herein was prepared by me or under my direct supervision.

Lowell R. Pommerehne 9-10-86
SIGNATURE DATE

Registration No. 17005

- Land Surveyor, Professional Engineer
- County Surveyor, County Engineer

OFFICE OF THE COUNTY RECORDER

County of _____

I hereby certify that this document was filed in the Co. Recorders office at _____ M. on the _____ day of _____ A.D., 19 _____

County Recorder _____

By _____, Deputy

DOCUMENT NO. _____

North Quarter Corner Section 17, Township 108 North, Range 43 West

This corner was originally established by the U. S. General Land Office survey in 1866. The government notes show corner marked with a wood post set in mound of earth with pits and trench dug around the mound.

In June 1982, the DNR Bureau of Engineering contacted the following for corner information:

Murray County Offices of the Recorder and Highway Engineer
Pipestone County Office of the Recorder

The following information was obtained from the Murray County Highway Engineer's Office:

Surveyor's Record Book contains ties to government corners in Section 8, surveyor not indicated, dated 1940. Corner is shown as a concrete stone with ties:

R. P. tack in corner fence post, North 34.8 ft.
R. P. edge of first steel post NE, 46.6 ft.
fence line north 2 ft. east of stone
fence south on line

This information also appears on a county corner tie sheet, dated 1940.

On July 6, 1982, the DNR Bureau of Engineering hired a backhoe operated by Buffalo Ridge Plumbing and Heating of Ruthton to dig for evidence of this corner. Found a 6" top diameter by 10" bottom diameter by 12" long concrete cylinder down 1" over a 2" by 2" by 15" hub, down 18" at natural ground. Searched for, but did not find record ties. Reset concrete monument down 6" over hub, and measured 2637.11 ft. from the northwest corner Section 17. Monument is on center line east-west road and fence lines north and south.

Accept the found monument as the location of the corner.

Traverse information is available from the DNR Bureau of Engineering.

On August 5, 1986 revisited the corner and found the DNR Survey Marker as previously set in good condition and took ties as shown.